

FLOOD LIGHT: FL

DATASHEET



Flood light FL series is highly efficient and reliable LED Flood light. It offers flexible options in optics, powers, control, accessories and mounting methods. Flood light FL series have IK08 Tempered glass for easy maintenance and cleaning, it is the first choice for any new or retrofit installations.

Advantage

- Die-cast aluminium, high heat dissipation.
- Sleek design, less prone to dust and water accumulation.
- Multiple photometric options.
- Adjustable angle.
- Supports NEMA smart control functions extension.
- Optically tempered glass design.

Application

- building exteriors
- parking lots,
- stadiums,
- outdoor signs
- public areas

Features

- Power: 50W - 200W
- CCT: 3000K - 5700K
- 140LM/W
- IP66, IK08
- warranty 5 years
- CB, CE, ENEC

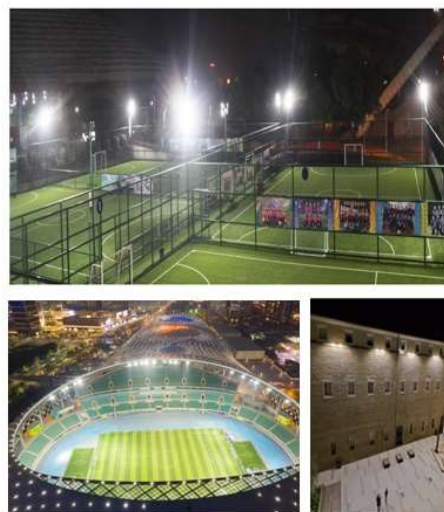




Table of Contents

Specification Information3

Features4

Accessories.....5

Dimensions6

Light distribution.....6

Packaging Information7

User manual8

Revision History.....9

About Edison Opto9

Specification Information

- Optical parameters**

Model No.	FL2-50W	FL2-100W	FL4-150W	FL4-200W
Power	50W	100W	150W	200W
Lumen	7000lm	14000lm	21000lm	28000lm
Efficiency	140lm/W*			
CCT	3000K, 4000K, 5700K			
CRI (Ra)	≥70			
SDCM	≤6			
Beam angle	13° **, 30°, 60°, 90°, Asymmetric***			

- Electrical parameters**

Input voltage	AC220-240V 50-60Hz
Power Factor	>0.95
Surge Protection	L-N:5KV, L/N-G:10KV
Dimmable	0-10V,PWM,Time dimming(Optional)

- Mechanical parameters and key materials**

Housing	ADC12 die-cast aluminum, surface spray color: RAL9023 gray
Cover Lens	UV-resistant PC
LED Brand/Model	EDISON 3030
LED Driver	MOSO

- General parameters**

Mounting	bracket mounting&Pole mounting
Operating Temperature	-20 ~ +50°C
Storage Humidity	10% ~ 85%
Protection	IP66, IK08
Electric class	Class I
Warranty	5 years
Lumen Maintenance	50,000 hours at L70
Certification	CE, CB, ENEC

*Base on: 4000K

**13°,Asymmetric,Efficiency:130Lm/W

***13°Base on 3535 beads

Due to the special conditions of manufacturing process of LED, the typical data of technical parameters can only reflect statistical figures and do not necessarily correspond to the actual

Features

Smart Upgrade

NEMA receptacle for smart upgrade



Double Input cable

AC input cable+ dimming input cable



Versatile Mounting Option

Various accessories provides versatile mounting options

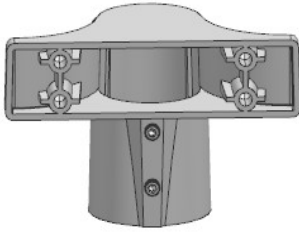


Photometric Flexibility

Numerous symmetric and asymmetric optics options



Accessories optional

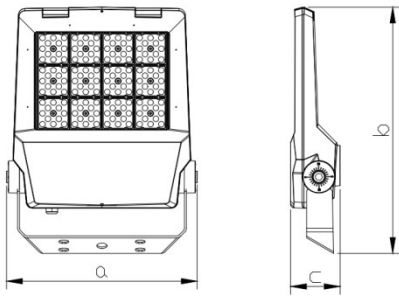


Handle accessories



NEMA

Dimensions

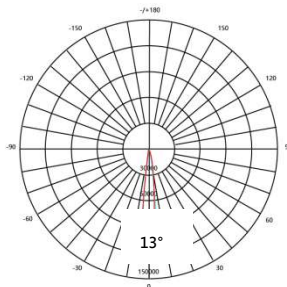


FL2

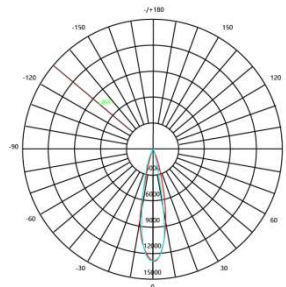
FL4

型號	FL2	FL4
a	300mm	485mm
b	386mm	390mm
c	78mm	95.5mm

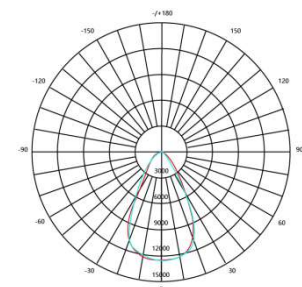
Light Distribution



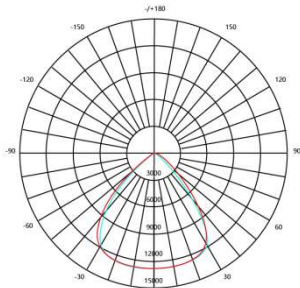
10°



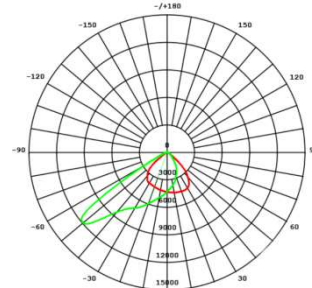
30°



60°



90°



Asymmetric

*Other optical type is available according to special request.

Packaging Information

Model No.	FL2	FL4
Packaging dimension (mm)	440*355*130	575*465*170
N. Weight (kg)	3.7	5.8
G. Weight (kg)	4.5	6.8
Packing	1Pc/carton	1Pc/carton

User Manual

A Installation on the firm and thin plate

Luminaire installation



1 Install the luminaire as shown below, guide screws through the hole of bracket and drilled hole on the plate. Tighten the nuts for fixing the luminaire on the plate. (The fasteners are not available for standard product.)

The dosage of M10 screw, nut and shim are four pieces.

2 Release screws with M10 hex wrench and then adjust angle. (angle range: +150°~90°)

3 Tighten screws with hex wrench.

⚠ Do not forget to screw the bolt with the torque indicated

B Installation on the ground or wall

1 Drill hole on the ground or wall

2 Fix M10 expansion screws

3 Install the luminaire on the ground (or wall) and then tighten the nuts.

4 Refer to step A (way 2 and 3), adjust angle depend on the demand

The dosage of screw, nut and shim are four pieces. (All of them are not available for standard product.)

C Installation on the lamp post

1 Take out the spigot and M10*20 hex socket flat end set screw. Install the spigot on the lamp post.

M10*20 hex socket flat end set screw

55 Nm

2 Release the screws for bracket to adjust and install on the spigot. Fix screws between bracket and spigot.

Release screws for bracket

Fix bracket and screws for spigot

55 Nm

The diameter of lamp post is 55-60mm

3 Tighten the screws for bracket depend on the demand.

90 Nm



Luminaire wiring

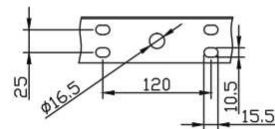
L Brown
Yellow&Green
N Blue

⚠ The luminaire must be grounded correctly

Connect to the power line using IP66 connectors and respecting the connection diagram

Connector IP66

hole site of bracket



Revision History

Versions	Description	Release Date
1.0	NEW	2023/11

About EdisonOpto

Edison Opto provides comprehensive LED and solid-state lighting products from LED Component, Light Module, UV / IR LED, LED sensing, Horticulture and Automotive Lighting. With a view to improve R&D process, Edison Opto develops the vertical platform on **TEMO™** (Thermal. Electrical. Mechanical. Optical) to ensure the quality of products and services; Furthermore, Edison Opto creates **LDMS™** (Lighting Design Manufacturing Service) from light source to luminaire manufacturing, to serve our customers a quality experience of customized solutions.



Lear more